



Imprint

Publisher:

speedART - eine Marke der DESIGNTEC e.K.
Im Stöckach 22

D-70839 Gerlingen

Phone : +49 / (0)7156 / 177 42 62
Fax : +49 / (0)7156 / 177 42 64
eMail : info@speedART.de
www.speedart.de

HRA 721078
Place of jurisdiction Ludwigsburg
Owner Björn Striening

All brands, brand names and logos are property of their respective owners.

Changes reserved



Conversion program for Porsche 997 Turbo
March 2012

Further informations about the navigation:



Interactive buttons and hyperlinks in the content overview to the right.



By clicking this symbol in the menu (product pages) you will get to the previous page.



By clicking this symbol in the menu (product pages) you will get to the next page.



By clicking this symbol in the menu (product pages) you will get to the content overview page.



By clicking this symbol in the menu (product pages) you can write us an email.



Article with TÜV technical approval.



Article with vehicle type approval.



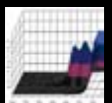
New article.



Video- and sound files are opening in a new window by clicking on this symbol.

24:00

Estimated time for the conversion between delivery and collection. Only for stock articles. (hours:minutes)



Dyno sheet files are opening in a new window by clicking on this symbol.



Conversion program for Porsche 997 Turbo

Aerodynamic

BTR-XL program	11
BTR program	17

Suspension

Suspension program	25
--------------------	----

Brakes

Brakes program	29
----------------	----

Wheels

Wheels program	32
----------------	----

Engine / Sport exhaust systems

Engine program stainless steel	65
Engine program TITANIUM	72

Interior

Interior program	76
------------------	----



1. place BTR-XL 600 Cabrio, 1.10,7 min.



Hockenheim

Sport Auto - Test 03/2008



1. place BTR 530, 1.38,5 min.



Nürburgring

Autobild Sportscars - Test 07/2007



1. place BTR 530, 1.28,2 min.



L'Anneau du Rhin

Auto Motor und Sport - 25/2006



2. place BTR-XL 550 Cabrio, 1.10,5 min.



Hockenheim

Tuner Grand Prix 05/2008





„In the beginning it was just one thought“

The idea: to generate and design individuality in combination with performance. In a branch where is no space for mistakes to set up a product and a brand which has never been there before.

The purposes: from the beginning clearly defined! Exclusivity, precision and quality. Every vehicle is a hand crafted masterpiece with character.

Since the foundation in 1999, *speedART* has pursued a logical strategy of growth and progress. By a narrow collaboration with our developing partners from the most different technology regions in Germany and worldwide, the combination of traditional craftsmanship and the modern production procedure is also assured for the future.

Results? Our biggest success is if you express the enthusiasm for your car with a smile.

Everything that counts: perfect evolution! To go a step further without losing the aims out of sight. That is our task.

„You have to try the impossible, to reach the possible.“
Hermann Hesse





BTR-XL

A superlative car needs a superlative name. BTR-XL is the cryptic abbreviation for Bi-Turbo-Racer-Xtra-Large. The top variation from *speedART*.

The BTR-XL is a combination of a vehicle suited for everyday driving and sports-car for the race track which unites agility and driving dynamic as well as aesthetics and functionality with each other. All this together makes the BTR-XL to

an unmistakeable experience of a quite special kind.

The vehicles do not originate simply somewhere, they become true in exactly the same region where also the headquarter of the company PORSCHE lies. The only 15 minutes distant swabian Rutesheim is the place where the vehicles in craft master work are getting improved. This new headquarter of *speed-*

ART since the end of 2007 is the result of the logical conversion of strategy and growth.

On about 2700m² originates here one of the most exciting sportscars in the world. Beside the BTR-XL, hand-picked specialists from the most different areas assemble here the various vehicles.

„Thinking and being are determined by the contradiction.“
Aristoteles

BTR-XL

To bring elegance and athletic in harmony was the premise in case of the BTR-XL. At the same time provides the BTR-XL with his risque proportions, harmonious surfaces and structured lines, the impression of smooth elegance.

The front part of the vehicle with the big air intakes allows to foresee the performance potential already in stand. An optimized air guidance and an improved current behaviour contributes also to the increased achievement like the extremely light materials which are also taking place here. Carbon materials also spray here a certain racing sport atmosphere.

The thrilling form of the vehicle stretches from the area of side skirts up to the rear diffuser in the back and also give the vehicle dominance in pure.

Raised spoiler in the rear, engine hood with RAM-air function, as well as rear diffuser and front spoiler are guarantors of the necessary downforce.

The BTR-XL is a striking vehicle and leaves a remaining impression.

„Who wants to interest, must provoke.“
Salvador Dali





speedART

www.speedART.de

BTR-XL

Proven achievement in a new dimension but still suitable for everyday driving.

The VTG-technology was strictly improved in collaboration with our developing partners. Therefore are 650hp and 860Nm torque available.

0-62 mph 3,3s, 0-124 mph 10,4s. Vmax about 213 mph. Values that impress like the whole car. For the efficient execution of the power have been installed a short shifter and a modified gearbox.

The amazing sound comes from a completely new exhaust system with sound switch control. It can be chosen between constantly loud, constantly quiet or controled by speed.

On the point: the BTR-XL celebrates a firework of power, agility and driving pleasure with a be-guiling sound.



„The living of the imagination is no escape in the unreal, it is boldness and invention.“
Eugene Ionesco



BTR-XL

Also in chassis and brakes we have done innovative and successful jobs together with our developing partner.

With the BTR-XL we can offer you different variations of chassis setups. Sportive setup but reasonable for every day or a complete adjustable CUP - coilover suspension, everything is possible. Also have been installed some stabilizers and strut bars for a better driving dynamic.

The interplay between aerodynamic, suspension and brakes is convincing and the pilot is not overcharged at any time.

So much power has to be decelerated sometimes. The aim is to be quicker from 62-0 mph, as from 0-62 mph. Between steel or ceramic brakes can be chosen. Forged wheels with a reduced weight are supporting the brake and a

modified air guidance of the brake system lowers the fading under racing conditions. Matching tires are providing the necessary Grip.

„The talents are often not so unequal, assiduity and character are making the difference.“

Theodor Fontane



BTR-XL 600

speedART

speedART BTR-XL 600

Aerodynamic BTR-XL



08:00



Frontskirt BTR-XL

Complete frontskirt with spoiler lip and design fog lights, air outlet grille in carbon, for an improved aerodynamic and more downforce

Painting and fitting

Art. Nr.: P97.150.005
Art. Nr.: P97.150.005UM

02:00



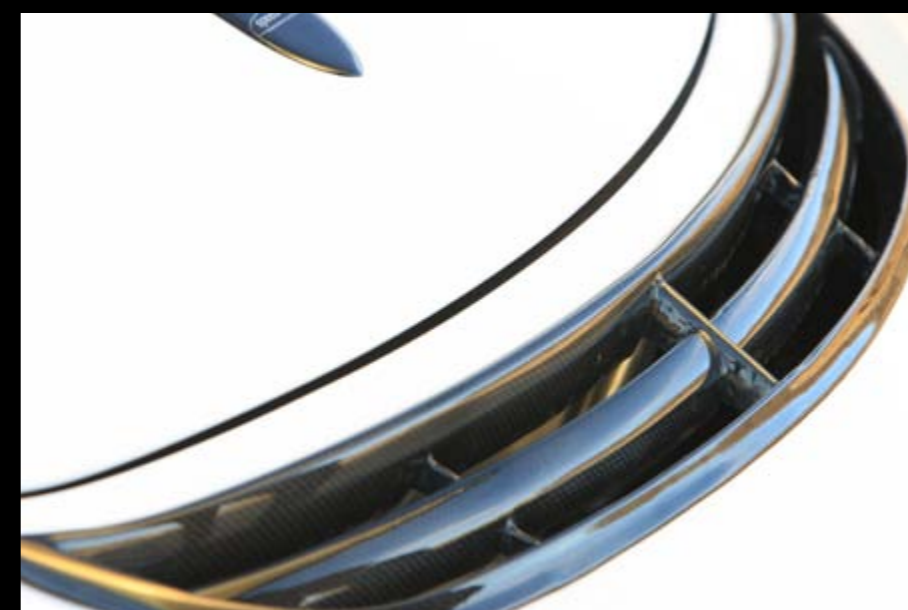
Air-outlet grille

Air-outlet grille for frontspoiler in plastic

Fitting

Art. Nr.: P97.150.011
Art. Nr.: P97.150.011UM

02:00



Air-outlet grille carbon

Air-outlet grille for frontspoiler in carbon black, surface shiny or matt

Fitting

Art. Nr.: P97.150.012
Art. Nr.: P97.150.012UM

Aerodynamic BTR-XL



00:30

Front bonnet BTR-XL carbon

Front bonnet in carbon black, weight: 4kg, surface shiny or matt

Fitting

Art. Nr.: P97.180.004
Art. Nr.: P97.180.004UM



[Image similar](#)

Side skirts BTR-XL

Side skirts for an improved aerodynamic and more downforce

Painting and fitting

Art. Nr.: P97.150.021
Art. Nr.: P97.150.021UM

24:00



Mirror housing BTR-XL carbon

Set of BTR-XL mirror housing in carbon black, surface shiny or matt

Fitting

Art. Nr.: P97.Car.007
Art. Nr.: P97.Car.007UM

01:00



Aerodynamic BTR-XL



01:00



Air inlet BTR-XL carbon

Set of BTR-XL air inlet in carbon black, surface shiny or matt

Fitting

Art. Nr.: P97.150.022
Art. Nr.: P97.150.022UM



24:00



Roof top spoiler BTR-XL

Roof top spoiler BTR-XL, for an improved aerodynamic and more downforce

Painting and fitting

Art. Nr.: P97.150.025
Art. Nr.: P97.150.025UM



04:00



Rear diffuser BTR-XL

Rear diffuser (2-piece) for fitting at the original rear skirt, inclusive center part, for an improved aerodynamic and more downforce

Painting and fitting

Art. Nr.: P97.150.031
Art. Nr.: P97.150.031UM

Aerodynamic BTR-XL



06:00

Rear spoiler BTR-XL

Rear spoiler with air intakes (RAM-Air), spoiler wing BTR, for an improved aerodynamic and more downforce

Painting and fitting

Art. Nr.: P97.150.044
Art. Nr.: P97.150.044UM



06:00

Rear spoiler BTR-XL carbon

Rear spoiler with air intakes (RAM-Air), spoiler wing BTR in carbon black, surface shiny or matt, for an improved aerodynamic and more downforce

Painting and fitting

Art. Nr.: P97.150.045
Art. Nr.: P97.150.045UM



06:00

Rear spoiler BTR-XL

Rear spoiler with air intakes (RAM-Air), for original 997 Turbo spoiler wing, for an improved aerodynamic and more downforce

Painting and fitting

Art. Nr.: P97.150.043
Art. Nr.: P97.150.043UM



Aerodynamic BTR-XL



02:00



Daytime running lights

Set of daytime running lights (no E1-permission) for 997 Turbo, parts in exchange, LED's in white and orange, inclusive cable set

Fitting

Art. Nr.: P97.150.001
Art. Nr.: P97.150.001UM

04:00



Rear skirt 997 Turbo 2.Generation

Complete rear skirt type 997 Turbo 2.Generation for 997 Turbo 1.Generation, cable set with LED rear lights and fitting material, (Please consider about PDC), Modification only possible by using a new sport exhaust.

Painting and fitting

Art. Nr.: P97.150.055
Art. Nr.: P97.150.055UM

04:00



Rear modification 997 Turbo 2.Generation

Complete rear modification for 997 Turbo 1st Generation to 2nd Generation. Consists of: rear bumper, rear LED-lights, cable set with fitting material, sport-catalysts, sport exhaust with original 2010 tail pipes, (Please consider about PDC)

Painting and fitting

Art. Nr.: P97.150.060
Art. Nr.: P97.150.060UM

Aerodynamic BTR



00:30



Rear Lights 997 Turbo 2.Generation

Modified LED-lights for 997 1. Generation

Fitting

Art. Nr.: P97.150.065
Art. Nr.: P97.150.065UM



BTR

In power an athlete, in optic a semi athlete. The BTR shows his potential with understatement.

Just by a second closer look, you recognize that this vehicle has the same genes like his big brother BTR-XL. Frontspoilerlip, side skirts, rear diffuser and rear spoiler are not only generating the necessary downforce, they also are showing their background. Not aggres-

sive, but impressive. A harmonic aerodynamic design which matches the performance.

They are brothers is also the keyword in case of the engine because the BTR is also running with a 650hp engine with modified VTG turbo-chargers. With the VTG technologie the maximum torque is already at 2.000 rpm present. Power explosions with 860nm are possible with

the VTG technologie. We are proud to be a part of this evolution and that we are able to form this technologie.

Like all vehicles the BTR is refined by hand and greatest accuracy in the swabian Rutesheim. Visit us and let us convince you of the passion and devotion with which we are doing this on every car.

„I check every offer. It could be the offer of my life.“
Henry Ford



To describe the design of the BTR needs debonair and a distanced point of view. Not possible with this beautiful and beguiling look.

An elegant crossing from front to rear without having negative effect upon the aerodynamic. The exact opposite.

More power, more downforce and more dynamic in optical aspects. All this has been converted successfully at the BTR.

Frontspoilerlip, side skirts, rear diffuser and rear spoiler are creating this unique look of the BTR.

„Nevertheless, someone who flees from the temptation, hopes secretly that it catches up him.“

Giovanni Guareschi



Aerodynamic BTR



01:00



Front chin spoiler BTR

Front chin spoiler for fitting on the original frontskirt, for an improved aerodynamic and more downforce

Painting and fitting

Art. Nr.: P97.150.002
Art. Nr.: P97.150.002UM



01:00



Front chin spoiler BTR carbon

Front chin spoiler in carbon black for fitting on the original frontskirt, surface shiny or matt, for an improved aerodynamic and more downforce

Fitting

Art. Nr.: P97.150.003
Art. Nr.: P97.150.003UM

00:30



Front bonnet BTR-XL carbon

Front bonnet in carbon black, weight: 4kg, surface shiny or matt

Fitting

Art. Nr.: P97.180.004
Art. Nr.: P97.180.004UM

Aerodynamic BTR



24:00



Side skirts BTR

Side skirts for an improved aerodynamic and more downforce

Painting and fitting

Art. Nr.: P97.150.021
Art. Nr.: P97.150.021UM

01:00



Mirror housing BTR carbon

Set of BTR mirror housing in carbon black, surface shiny or matt

Fitting

Art. Nr.: P97.Car.007
Art. Nr.: P97.Car.007UM



04:00



Rear diffuser BTR

Rear diffuser (2-piece) for fitting at the original rear skirt, inclusive center part, for an improved aerodynamic and more downforce

Painting and fitting

Art. Nr.: P97.150.031
Art. Nr.: P97.150.031UM

Aerodynamic BTR



00:30



Rear spoiler BTR

Rear spoiler BTR for fitting at the original engine hood

Painting and fitting

Art. Nr.: P97.150.041
Art. Nr.: P97.150.041UM



00:30



Rear spoiler BTR carbon

Rear spoiler BTR in carbon black for fitting at the original engine hood, surface shiny or matt

Fitting

Art. Nr.: P97.150.042
Art. Nr.: P97.150.042UM

02:00



Daytime running lights

Set of daytime running lights (no E1-permission) for 997 Turbo, parts in exchange, LED's in white and orange, inclusive cable set

Fitting

Art. Nr.: P97.150.001
Art. Nr.: P97.150.001UM

Aerodynamic BTR



04:00

Rear skirt 997 Turbo 2.Generation

Complete rear skirt type 997 Turbo 2.Generation for 997 Turbo 1.Generation, cable set with LED rear lights and fitting material, (Please consider about PDC), Modification only possible by using a new sport exhaust.

Painting and fitting

Art. Nr.: P97.150.055
Art. Nr.: P97.150.055UM



Rear modification 997 Turbo 2.Generation

Complete rear modification for 997 Turbo 1st Generation to 2nd Generation. Consists of: rear bumper, rear LED-lights, cable set with fitting material, sport-catalysts, sport exhaust with original 2010 tail pipes, (Please consider about PDC)

Painting and fitting

Art. Nr.: P97.150.060
Art. Nr.: P97.150.060UM

04:00



Rear Lights 997 Turbo 2.Generation

Modified LED-lights for 997 1. Generation

Fitting

Art. Nr.: P97.150.065
Art. Nr.: P97.150.065UM

00:30





Suspension

Optimum transmission, high cornering speed, controllable at the limits and a safe driveability.

Sportive or comfortable! We do the setup like you wish. Modern suspensions with active controlled systems are offering still an optimizing of driveability because the most series suspensions are a compromise of sportive and comfort. We can offer you various opportunities

from comfortable suspension to complete adjustable coilover systems.

A brilliant cooperation between our development partner and test drivers is setting us in the lucky position to go on moving the limits of driving physics in your favor.

„Faith to those who search the truth and doubt those who already have found.“
Andre Gide

Suspension



08:00

Stabilizer-kit adjustable front axle / rear axle

Adjustable Stabilizers for front and rear axle, optimized handling because preventing body roll

survey and fitting

Art. Nr.: P97.340.001T
Art. Nr.: P97.340.001TUM



08:00

Sport springs front axle / rear axle

Sport springs front axle / rear axle, lowering about 20 mm, sportive suspension

survey and fitting

Art. Nr.: P97.330.001T
Art. Nr.: P97.330.001TUM



24:00

Coilover suspension setup „Street Performance“ with PASM

Adjustable coilover suspension for vehicles with PASM, adjustable height 15 - 35mm

survey and fitting

Art. Nr.: P97.323.003T
Art. Nr.: P97.323.003TUM



Suspension



24:00



Coilover suspension setup „Street Performance“ without PASM

Adjustable coilover suspension for vehicles without PASM, adjustable height 15 - 35mm

survey and fitting

Art. Nr.: P97.322.003T
Art. Nr.: P97.322.003TUM



24:00



Coilover suspension setup „Race Performance“ without PASM

Completer adjustable coilover suspension for vehicles without PASM, adjustable height 10 - 30mm

survey and fitting

Art. Nr.: P97.324.001T
Art. Nr.: P97.324.001TUM



24:00



Coilover suspension setup „Cup Performance“ without PASM

Complete adjustable coilover suspension with Unibal for vehicles without PASM, adjustable height 20 - 45 mm

survey and fitting

Art. Nr.: P97.325.001T
Art. Nr.: P97.325.001TUM

Suspension



24:00

Coilover suspension setup „Race Performance“ hydraulic FA

Complete adjustable coilover suspension with hydraulic adjustable setup at the front axle, remote control or automatically controlled by speed, adjustable height 10 - 30 mm, PASM will be deleted

survey and fitting

Art. Nr.: P97.340.002T
Art. Nr.: P97.340.002TUM



24:00

Coilover suspension setup „Race Performance“ hydraulic FA/RA

Complete adjustable coilover suspension with hydraulic adjustable setup at front and rear axle, remote control or automatically controlled by speed, adjustable height 10 - 30 mm, PASM will be deleted

survey and fitting

Art. Nr.: P97.340.001T
Art. Nr.: P97.340.001TUM





Brakes

From 62 to 0 mph faster than from 0 to 62 mph.

To secure safety by power improved vehicles, it is necessary to adapt the brakes the engine power. Like the suspension, the brakes also can be improved in different ways.

Sport brake systems up to race brake systems made of ceramic component

material. We can offer different opportunities and the right setup for your requirements. To get an maximum in brake performance all components like suspension, wheels and tires have to be attuned well. Different motorsport and hightech materials are taking place in here.

Together with our technology and developing partner we are trying to improve

the different systems and technics in security, reliability, performance and driving pleasure.

„Who says A must not say B. He can also recognise that A was wrong.“
Bertolt Brecht

Brakes



ABE

02:00

Stainless steel brake hoses

Stainless steel brake hoses. Reducing the fading effect during heavy braking

Fitting and brake fluid

Art. Nr.: P97.SFL.TBR
Art. Nr.: P97.SFL.TBRUM



Brake-disc Upgrade FA 350mm without PCCB

Brake-disc Upgrade 350mm 2-piece, drilled version, for series brake system without PCCB

Fitting and brake fluid

Art. Nr.: P97.350.350.TBR
Art. Nr.: P97.350.350.TBRUM



02:00



Sport brake system 380mm FA

Sport brake system 380 x 32mm 2-piece, slotted version, 6-pistons brake caliper in yellow, black, red or silver, comfort- and sport- brake pads are freely selectable, inclusive stainless steel brake hoses, maybe only in combination with 20" wheels

Fitting and brake fluid

Art. Nr.: P97.355.380.6BR
Art. Nr.: P97.355.380.6BRUM



04:00



Brakes



04:00

Sport brake system 380mm RA

Sport brake system 380 x 28mm 2-piece, slotted version, 4-pistons brake caliper in yellow, black, red or silver, comfort- and sport- brake pads are freely selectable, inclusive stainless steel brake hoses, maybe only in combination with 20" wheels

Fitting and brake fluid

Art. Nr.: P97.356.380.4BR
Art. Nr.: P97.356.380.4BRUM



Special paint brake calipers

Special paint of brake calipers
Color freely selectable

Fitting and brake fluid

Art. Nr.: P97.351.001
Art. Nr.: P97.351.001UM

72:00





Wheels

Form follows function or reversed, just how you wish. Give your car an individual taste.

No matter if one piece forged or modular. Between different variants and types can be chosen.

Also we can offer individual paint jobs or powder coatings of wheel center, wheel lip and wheel bed in various colors. For

sportive and race driving we have weight reduced wheels in our product range.

Another enhancement in value you can reach with our harmonic wheel designs. Strong contours or smooth curves are creating a special and personal appearance of your car and highlight the claims of sportive elegance.

„The normality is a paved street, you can go well on it, however, there grow no flowers on her.“
Vincent van Gogh



Light Spoke Competition - FORGED 20"

Versions



Center star

Outer wheel bed



Silver



Silver chrome



Polished



Chrome



Silver matt



Gun Metal



Black anodized



Black matt anodized



Black



Black matt



Special

LSC - FORGED 20"



LSC - FORGED wheel front axle

LSC - FORGED wheel, modular, 2-pieces, forged center
Front axle: 8,5 x 20"

Art. Nr.: P11.LSC.100.01A



LSC - FORGED wheel rear axle

LSC - FORGED wheel, modular, 2-pieces, forged center
Rear axle: 10,5 x 20"

Art. Nr.: P11.LSC.100.04A



LSC - FORGED wheel rear axle

LSC - FORGED wheel, modular, 2-pieces, forged center
Rear axle: 11,5 x 20"

Art. Nr.: P11.LSC.100.03A

LSC - FORGED 20"



LSC - FORGED wheelset inclusive tires

LSC - FORGED wheelset, modular, forged center

FA: 8,5 x 20" with 235/30 ZR20, RA: 10,5 x 20" with 305/25 ZR20

Tire: Michelin Pilot Sport or Continental Sport Contact

Art. Nr.: P11.LSC.800.01A



LSC - FORGED wheelset inclusive tires

LSC - FORGED wheelset, modular, forged center

FA: 8,5 x 20" with 245/30 ZR20, RA: 11,5 x 20" with 325/25 ZR20

Tire: Michelin Pilot Sport or Continental Sport Contact

Art. Nr.: P11.LSC.800.02A



LSC - FORGED wheelset inclusive tires

LSC - FORGED wheelset, forged center

FA: 8,5 x 20" with 235/30 ZR20, RA: 11,5 x 20" with 305/25 ZR20

Tire: Michelin Pilot Sport or Continental Sport Contact

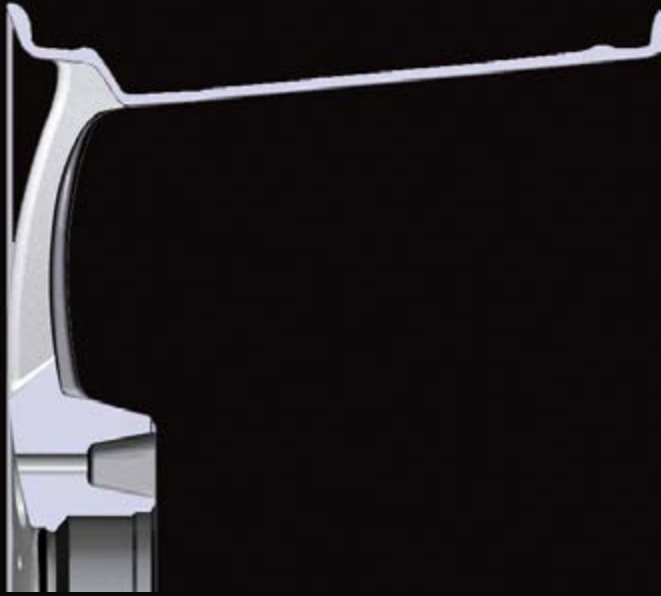
Art. Nr.: P11.LSC.800.03A



Original Fuchs wheel 19"

1-piece forged

Original Fuchs wheel 19"



1-piece monobloc forged
1-piece forged monobloc wheel

Despite the fact that this construction has a high solidness it also has by comparison a low weight. The offset can be adjusted by millimeters. Because of this construction there is no need for spacers.



Original Fuchs wheel 19"



Original Fuchs wheel front axle

Original Fuchs wheel, 1-piece screwed, forged center
Front axle: 8,5 x 19"

Art. Nr.: P11.RFD.008.019



Original Fuchs wheel rear axle

Original Fuchs wheel, 1-piece screwed, forged center
Rear axle: 11 x 19"

Art. Nr.: P11.RFD.011.019



Original Fuchs wheelset inclusive tires

Original Fuchs wheelset, 1-piece forged wheel
FA: 8,5 x 19" with 235/35 ZR19, RA: 11 x 19" with 305/30 ZR19
Tire: Michelin Pilot Sport oder Continental Sport Contact

Art. Nr.: P11.RFD.211.018

Original Fuchs wheel 19"



RDK - Tire pressure control

RDK-Sensors for series tire pressure control
Mind the region code in MHZ

Art. Nr.: P11.RFD.RDK.020





RSC II Elegance 20"

3-piece screwed & welded

RSC II Elegance



3-piece screwed & welded

Screwed & welded 3-piece wheel consists of:

- Center star (Aluminium casted or forged)
- Outer wheel bed (Aluminium cold forged, rolled, CNC-machined) glossy polished and anodized
- Inner wheel bed (Aluminium cold forged, rolled, anodized)

Because of the welded rim rings the center star needs less screws to get the necessary solidness. Due to the fact there is more scope to design the wheel. For example in the area of the spokes there is no need for screws.



Versions



Center star

Outer wheel bed



Silver



Silver chrome



Polished



Chrome



Silver matt



Gun Metal



Black anodized



Black matt anodized



Black



Black matt



Special

RSC II Elegance 20"



RSC II Elegance wheel front axle

RSC II Elegance wheel, 3-piece screwed & welded
Front axle: 8,5 x 20"

Art. Nr.: P10.130.260.010



RSC II Elegance wheel rear axle

RSC II Elegance wheel, 3-piece screwed & welded
Rear axle: 11 x 20"

Art. Nr.: P10.130.260.020



RSC II Elegance wheel rear axle

RSC II Elegance wheel, 3-piece screwed & welded
Rear axle: 12 x 20"

Art. Nr.: P10.130.260.030

RSC II Elegance 20"



RSC II Elegance wheelset inclusive tires

RSC II Elegance wheelset, 3-piece screwed & welded
FA: 8,5 x 20" with 235/30 ZR20, RA: 11 x 20" with 285/25 ZR20
Tire: Michelin Pilot Sport or Continental Sport Contact

Art. Nr.: P10.130.360.020



RSC II Elegance wheelset inclusive tires

RSC II Elegance wheelset, 3-piece screwed & welded
FA: 8,5 x 20" with 245/30 ZR20, RA: 12 x 20" with 325/25 ZR20
Tire: Michelin Pilot Sport or Continental Sport Contact

Art. Nr.: P10.130.360.030

RDK - Tire pressure control

RDK-Sensors for series tire pressure control
Mind the region code in MHZ

Art. Nr.: P11.LSC.RDK.030





RSC II Elegance 19"

3-piece screwed & welded

RSC II Elegance 19"



RSC II Elegance wheel front axle

RSC II Elegance wheel, 3-piece screwed & welded
Front axle: 8,5 x 19"

Art. Nr.: P10.130.250.010



RSC II Elegance wheel rear axle

RSC II Elegance wheel, 3-piece screwed & welded
Rear axle: 11 x 19"

Art. Nr.: P10.130.250.020



RSC II Elegance wheel rear axle

RSC II Elegance wheel, 3-piece screwed & welded
Rear axle: 12 x 19"

Art. Nr.: P10.130.250.030

RSC II Elegance 19"



RSC II Elegance wheelset inclusive tires

RSC II Elegance wheelset, 3-piece screwed & welded
FA: 8,5 x 19" with 235/35 ZR19, RA: 11 x 20" with 295/30 ZR19
Tire: Michelin Pilot Sport or Continental Sport Contact

Art. Nr.: P10.130.350.010



RSC II Elegance wheelset inclusive tires

RSC II Elegance wheelset, 3-piece screwed & welded
FA: 8,5 x 19" with 235/35 ZR19, RA: 12 x 19" with 315/25 ZR19
Tire: Michelin Pilot Sport or Continental Sport Contact

Art. Nr.: P10.130.350.030

RDK - Tire pressure control

RDK-Sensors for series tire pressure control
Mind the region code in MHZ

Art. Nr.: P11.LSC.RDK.030





Cross Racing 20"

3-piece screwed

Cross Racing



3-piece screwed

Screwed 3-piece wheel consists of:

- Center star (Aluminium casted or forged)
- Outer wheel bed (Aluminium cold forged, rolled, CNC-machined) glossy polished and anodized
- Inner wheel bed (Aluminium cold forged, rolled, anodized).

At almost all 3-piece outer wheel beds is the rim flange rolled to the inner side. Those wheel beds have a cavern and reduced solidness compared to the forged outer wheel beds made of full aluminium. Also those wheel beds have a safety E.T.R.T.O. hump which is an advantage compared to other wheels of the competitors.



Versions



Center star

Outer wheel bed



Silver



Silver chrome



Polished



Chrome



Silver matt



Gun Metal



Black anodized



Black matt anodized



Black



Black matt



Special

Cross Racing 20"



Cross Racing wheel front axle

Cross Racing wheel, 3-piece screwed
Front axle: 8,5 x 20"

Art. Nr.: P10.230.260.010



Cross Racing wheel rear axle

Cross Racing wheel, 3-piece screwed
Rear axle: 11 x 20"

Art. Nr.: P10.230.260.020



Cross Racing wheel rear axle

Cross Racing wheel, 3-piece screwed
Rear axle: 12 x 20"

Art. Nr.: P10.230.260.030

Cross Racing 20"



Cross Racing wheelset inclusive tires

Cross Racing wheelset, 3-piece screwed
FA: 8,5 x 20" with 235/30 ZR20, RA: 11 x 20" with 305/25 ZR20
Tire: Michelin Pilot Sport or Continental Sport Contact

Art. Nr.: P10.230.360.020



Cross Racing wheelset inclusive tires

Cross Racing wheelset, 3-piece screwed
FA: 8,5 x 20" with 245/30 ZR20, RA: 12 x 20" with 325/25 ZR20
Tire: Michelin Pilot Sport or Continental Sport Contact

Art. Nr.: P10.230.360.030



RDK - Tire pressure control

RDK-Sensors for series tire pressure control
Mind the region code in MHZ

Art. Nr.: P11.LSC.RDK.030



Cross Racing 19"

3-piece screwed

Cross Racing 19"



Cross Racing wheel front axle

Cross Racing wheel, 3-piece screwed
Front axle: 8,5 x 19"

Art. Nr.: P10.230.250.010



Cross Racing wheel rear axle

Cross Racing wheel, 3-piece screwed
Rear axle: 11 x 19"

Art. Nr.: P10.230.250.020



Cross Racing wheel rear axle

Cross Racing wheel, 3-piece screwed
Rear axle: 12 x 19"

Art. Nr.: P10.230.250.030

Cross Racing 19"



Cross Racing wheelset inclusive tires

Cross Racing wheelset, 3-piece screwed
FA: 8,5 x 19" with 235/35 ZR19, RA: 11 x 19" with 295/30 ZR19
Tire: Michelin Pilot Sport or Continental Sport Contact

Art. Nr.: P10.230.350.010



Cross Racing wheelset inclusive tires

Cross Racing wheelset, 3-piece screwed
FA: 8,5 x 19" with 235/35 ZR19, RA: 12 x 19" with 315/25 ZR19
Tire: Michelin Pilot Sport or Continental Sport Contact

Art. Nr.: P10.130.350.030

RDK - Tire pressure control

RDK-Sensors for series tire pressure control
Mind the region code in MHZ

Art. Nr.: P11.LSC.RDK.030





Cross Racing Mono 20"

1-piece forged , modular look

Versions



Black



Silver

Cross Racing Mono 20"



Cross Racing Mono wheel front axle

Cross Racing Mono wheel, 1-piece, forged, modular look
front axle: 9 x 20"

Art. Nr.: P11.SAA.CR001SE



Cross Racing Mono wheel rear axle

Cross Racing Mono wheel, 1-piece, forged, modular look
rear axle: 9,5 x 20"

Art. Nr.: P11.SAA.CR002SE



Cross Racing Mono wheel rear axle

Cross Racing Mono wheel, 1-piece, forged, modular look
rear axle: 11,5 x 20"

Art. Nr.: P11.SAA.CR115SE

Cross Racing Mono 20"



Cross Racing Mono Radsatz

Cross Racing wheelset, modular look
FA: 9 x 20" ET47 with 245/30 ZR20, RA: 11,5 x 20" ET56 with 325/25 ZR20
Tire: Michelin Pilot Sport 2 or Continental Sport Contact 3/5
Standard colors: silver or black matt

Art. Nr.: P10.295.115.SAA



Cross Racing Mono Radsatz

Cross Racing wheelset, modular look
FA: 9 x 20" ET47 with 245/30 ZR20, RA: 11,5 x 20" ET56 with 325/25 ZR20
Tire: Michelin Pilot Sport 2 or Continental Sport Contact 3/5
Standard colors: silver or black matt

Art. Nr.: P10.305.115.SAA



Cross Racing Mono Radsatz

Cross Racing wheelset, modular look
FA: 9 x 20" ET47 with 245/30 ZR20, RA: 11,5 x 20" ET56 with 325/25 ZR20
Tire: Michelin Pilot Sport 2 or Continental Sport Contact 3/5
Standard colors: silver or black matt

Art. Nr.: P10.325.115.SAA



Cross Racing Mono 20"



RDK - Tire pressure control

RDK-Sensors for series tire pressure control
Mind the region code in MHZ

Art. Nr.: P11.LSC.RDK.030





Engine

VTG = Variable - Turbine - Geometry. Power increase based on the newest technical standards and at the level of the happening.

Power in every situation, is brought by the modified VTG turbo chargers.

In comparison to the previous turbocharger concepts the VTG-turbochargers deliver in the lower area of rpm a torque

like never before and that simultaneous over the whole rpm area. All components like gearbox, clutch and engine are so attuned that at every time the maximum power is available.

In cooperation with aerodynamic, suspension, wheels, tires and brakes it creates an amazing value of driving dynamic.

„The whole thing is more than the sum of its parts.“
Aristoteles

Engine



00:30



Sport air filter

Sport air filter

Fitting

Art. Nr.: P97.520.010.018
Art. Nr.: P97.520.010.018UM

24:00



Sport clutch performance kit 900Nm

Sport clutch performance kit up to 900Nm, recommended for powerkits above 550hp

Fitting

Art. Nr.: P97.900.560.010
Art. Nr.: P97.900.560.010UM

24:00



Sport one mass flywheel

Sport one mass flywheel for weight reduction and better response

Fitting

Art. Nr.: P97.900.560.020
Art. Nr.: P97.900.560.020UM

Engine



05:00

Sport intercoolers

Sport intercoolers with better air cooling for additional power

Fitting

Art. Nr.: P97.LLK.97T
Art. Nr.: P97.LLK.97TUM



Dyno performance test

Entry or exit dyno performance test (4-wheel) to detect effective performance
Appointment necessary

Art. Nr.: PXX.250.001

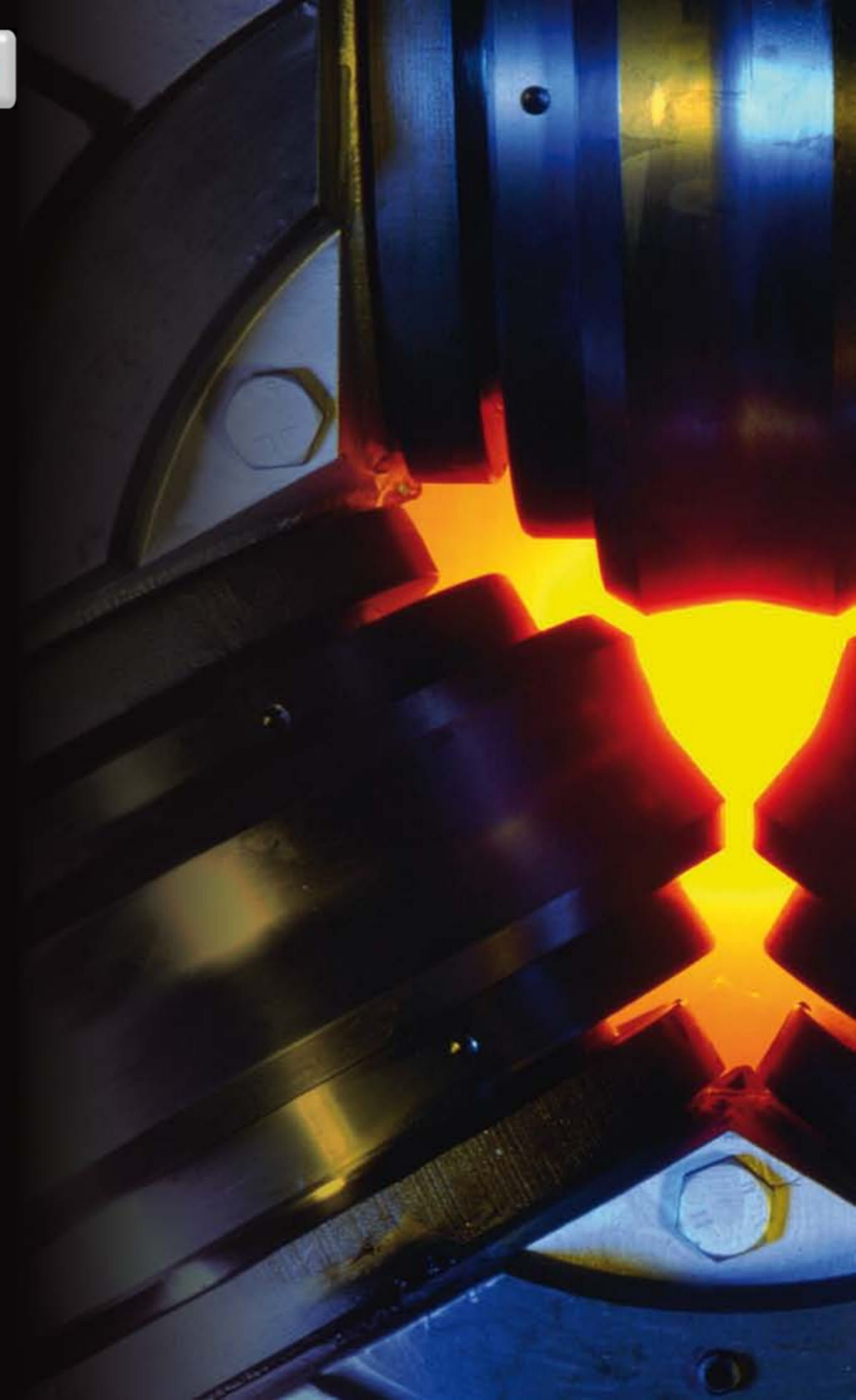


Stainless steel T304



Corrosion resistant chrome-nickel steel

T304 is the standard of the austenitic chrome-nickel steels. Because of the high corrosion reliability and the good workability plus the attractive look in polished, sanded or brushed condition it is used in different areas.



Engine



02:00



Sport manifolds

Sport manifolds for simultaneous air guidance of the turbo chargers

Fitting

Art. Nr.: P97.680.080.010
Art. Nr.: P97.680.080.010UM



03:00



Sport exhaust

Sport exhaust for original tailpipes, 200 cells sport catalyts, EU- or Export-Sound, Motronic-update recommended

Fitting

Art. Nr.: P97.680.080.030
Art. Nr.: P97.680.080.030UM



03:00



Sport exhaust 2 x 80mm twin tailpipes

Sport exhaust with 2 x 80mm twin tailpipes stainless steel polished, 200 cells sport catalyts, EU- or Export-Sound, Motronic-update recommended

Fitting

Art. Nr.: P97.680.080.050
Art. Nr.: P97.680.080.050UM

Engine



Sport exhaust with sound control 2 x 80mm twin tailpipes

Sport exhaust with sound control, 2 x 80mm twin tailpipes stainless steel polished, 200 cells sport catalysts, EU- or Export-Sound, Motronic-update recommended, control of sound switch optionally via separate button or „Sport“-button (requires „Sport Chrono Package“)

Fitting

Art. Nr.: P97.680.080.070
Art. Nr.: P97.680.080.070UM

08:00





	Version 1 520hp / 720Nm	Version 2 530hp / 730Nm	Version 3 530hp / 730Nm	Version 4 550hp / 780Nm	Version 5 600hp / 800Nm	Version 6 630hp / 840Nm
MOTRONIC	✓	✓	✓	✓	✓	✓
Sound control			✓	✓	✓	✓
Sound improving		✓	✓	✓	✓	✓
Original tailpipes		✓	not available	not available	not available	not available
Twin-tailpipes		optionally	✓	✓	✓	✓
Power improving	40hp / 100Nm	50hp / 110Nm	50hp / 110Nm	70hp / 160Nm	120hp / 180Nm	150hp / 220Nm
Fitting time	01:00	03:30	08:30	10:30	24:00	24:00
Article number	P97.750.080.010	P97.750.080.020	P97.750.080.040	P97.750.080.050	P97.750.080.060	P97.750.080.070

Engine



01:00



Powerkit I 520 hp / 720 Nm

Powerkit I
Motronic-Update for 520 hp / 720 Nm with modified ECU

Version 1
Fitting

Art. Nr.: P97.750.080.010
Art. Nr.: P97.750.080.010UM

01:00



Powerkit I+ 530 hp / 730 Nm

Powerkit I+
Motronic-Update for 530 hp / 730 Nm with additional ECU

Fitting

Art. Nr.: P97.750.080.011
Art. Nr.: P97.750.080.011UM



03:30



Powerkit II 530 hp / 730 Nm Sport exhaust

Powerkit II for 530 hp / 730 Nm, Motronic-update, sport exhaust for original tailpipes, 200 cells sport-catalysts, EU- or Export-Sound

Version 2
Fitting

Art. Nr.: P97.750.080.020
Art. Nr.: P97.750.080.020UM

Engine



Powerkit II 530 hp / 730 Nm Sport exhaust

Powerkit II for 530 hp / 730 Nm, Motronic-update, sport exhaust with 2 x 80mm twin tailpipes stainless steel polished, 200 cells sport-catalysts, EU- or Export-Sound

Version 2 option
Fitting

Art. Nr.: P97.750.080.030
Art. Nr.: P97.750.080.030UM

04:00



Powerkit II 530 hp / 730 Nm Sport exhaust with sound control

Powerkit II for 530 hp / 730 Nm, Motronic-update, sport exhaust with sound control, 2 x 80mm twin tailpipes stainless steel polished, 200 cells sport-catalysts, EU- or Export-Sound, control of sound switch optionally via separate button or „Sport“-button (requires „Sport Chrono Package“)

Version 3
Fitting

Art. Nr.: P97.750.080.040
Art. Nr.: P97.750.080.040UM



08:30



Powerkit III 550 hp / 780 Nm Sport exhaust with sound control

Powerkit III for 550 hp / 780 Nm, Motronic-update, sport exhaust with sound control, 2 x 80mm twin tailpipes stainless steel polished, 200 cells sport-catalysts, sport manifolds, EU- or Export-Sound, control of sound switch optionally via separate button or „Sport“-button (requires „Sport Chrono Package“), reinforced clutch recommended

Version 4
Fitting

Art. Nr.: P97.750.080.050
Art. Nr.: P97.750.080.050UM



10:30



Engine



Powerkit IV 600 hp / 800 Nm Sport exhaust with sound control

Powerkit IV for 600 hp / 800 Nm, Motronic-update, sport exhaust with sound control, 2 x 80mm twin tailpipes stainless steel polished, 200 cells sport-catalysts, sport manifolds, sport air filter, modified VTG-turbocharger, EU- or Export-Sound, control of sound switch optionally via separate button or „Sport“-button (requires „Sport Chrono Package“), reinforced clutch necessary

Version 5
Fitting

Art. Nr.: P97.750.080.060
Art. Nr.: P97.750.080.060UM

24:00



Powerkit VI 630 hp / 840 Nm Sport exhaust with sound control

Powerkit VI for 630 hp / 840 Nm, Motronic-update, sport exhaust with sound control, 2 x 80mm twin tailpipes stainless steel polished, 100 cells sport-catalysts, sport manifolds, sport air filter, modified VTG-turbocharger, bigger intercooler, EU- or Export-Sound, control of sound switch optionally via separate button or „Sport“-button (requires „Sport Chrono Package“), reinforced clutch necessary

Version 6
Fitting

Art. Nr.: P97.750.080.070
Art. Nr.: P97.750.080.070UM

24:00

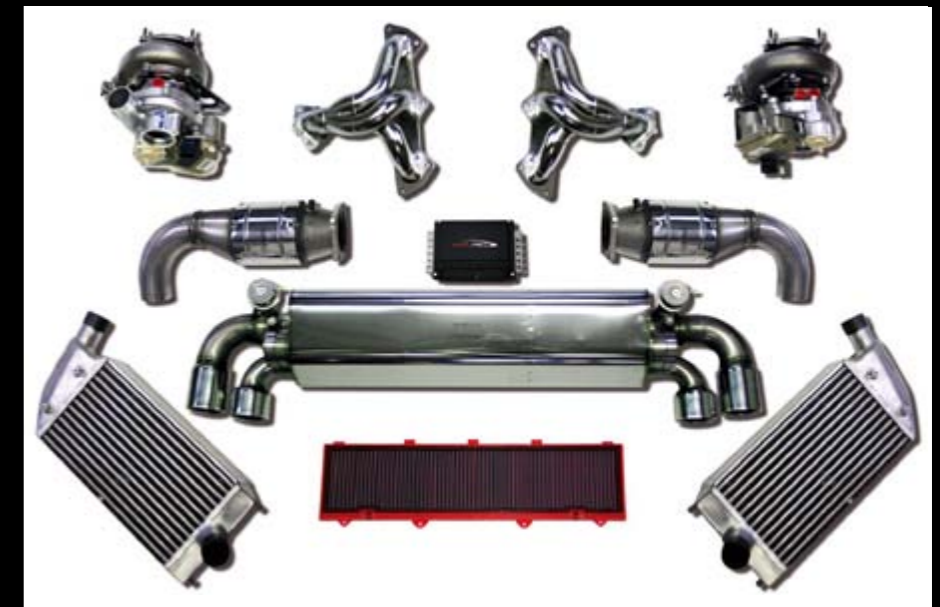


Powerkit VII 750 hp / 910 Nm sport exhaust with sound control

Powerkit VI for 750 hp / 910 Nm, Motronic update, sport exhaust, 2 x 80mm twin tailpipes stainless steel polished, 100 cells sport catalysts, sport manifolds, sport air filter, K24/7-turbocharger, bigger intercoolers, modified fuel system, sport camshafts, modified intake system, EU- or Export-Sound, control of sound switch optionally via separate button or „Sport“-button (requires „Sport Chrono Package“), reinforced clutch necessary

Art. Nr.: P97.750.080.090

360:00



TITANIUM



Titanium

Compared to stainless steel the titanium reduces the weight about 40% and contributes additional power and torque.

The several components are optimized for best results in air guidance.

Construction characteristics titanium exhaust systems:

- Reducing of oxigen pickup because of reduced hotspots
- special welding process
- Optimized exhaust gas guidance

All systems are hand crafted and could be defined for special requirements.



Engine



02:00



AKRAPOVIC sport manifolds TITANIUM

AKRAPOVIC sport manifolds for simultaneous air guidance of the turbo chargers
Made of TITANIUM

Fitting

Art. Nr.: P97.680.090.010
Art. Nr.: P97.680.090.010UM



04:00



AKRAPOVIC sport exhaust oval twin tailpipes TITANIUM

AKRAPOVIC sport exhaust with oval twin tailpipes, sport catalyts, made of TITANIUM,
EU- or Export-Sound

Fitting

Art. Nr.: P97.680.090.020
Art. Nr.: P97.680.090.020UM



04:00



Sport exhaust 2 x 80mm twin tailpipes TITANIUM

port exhaust 2 x 80mm twin tailpipes stainless steel polished, 200 cells sport catalyts,
made of TITANIUM, EU- or Export-Sound, Motronic-update is recommended

Fitting

Art. Nr.: P97.680.090.030
Art. Nr.: P97.680.090.030UM

Engine



Sport exhaust with sound control 2 x 80mm twin tailpipes TITANIUM

Sport exhaust with sound control made of TITANIUM, 2 x 80mm twin tailpipes made of TITANIUM, 200 cells sport catalyts made of TITANIUM, EU- or Export-Sound, Motronic-update is recommended, control of sound switch optionally via seperate button or „Sport“-button (requires „Sport Chrono Package“)

Fitting

Art. Nr.: P97.680.090.050
Art. Nr.: P97.680.090.050UM

08:00



Powerkit III 550 hp / 780 Nm Sport exhaust with sound control TITANIUM

Powerkit III for 550 hp / 780 Nm, Motronic-update, sport exhaust with sound control made of TITANIUM, 2 x 80mm twin tailpipes made of TITANIUM, 200 cells sport catalyts made of TITANIUM, sport manifolds made of TITANIUM, EU- or Export-Sound, control of sound switch optionally via seperate button or „Sport“-button (requires „Sport Chrono Package“), reinforced clutch recommended

Fitting

Art. Nr.: P97.750.090.010
Art. Nr.: P97.750.090.010UM



10:30



Powerkit VI 630 hp / 840 Nm Sport exhaust with sound control TITANIUM

Powerkit VI auf 630 hp / 840 Nm, Motronic-update, sport exhaust with sound control made of TITANIUM, 2 x 80mm twin tailpipes made of TITANIUM, 200 cells sport catalyts made of TITANIUM, sport manifolds made of TITANIUM, sport air filter, modified VTG-turbocharger, bigger intercooler, EU- or Export-Sound, Acontrol of sound switch optionally via seperate button or „Sport“-button (requires „Sport Chrono Package“), reinforced clutch necessary

Fitting

Art. Nr.: P97.750.090.020
Art. Nr.: P97.750.090.020UM

24:00





Interior

Fabric, leather and microfiber and also carbon, stainless steel, aluminium and wood. In combination with entertainment and multimedia. Various forms and colors in any thinkable version.

Also here the best materials are used and technology on the newest state of the things. No matter whether tone in tone, Bi-color or a mix from the respective materials, in creating the interior the-

re are nearly no borders placed. In the course of the years all this only became possible by an intensive collaboration with the most different companies who have specialized themselves in individualizing interiors.

Here it is exclusively pure manual labour and the standards in quality and processing are exceptionally high. Please notice that a listing of all products and

variations in the interior is in this prospect not possible because of the large amount of opportunities.

Please send us your enquiry direct to info@speedART.de. We will send you as soon as possible our response and a detailed offer.

„Temptations you should give in. Who knows if they come back!“
Oscar Wilde

Interior



24:00

Instrument dials

Instrument dials for all 997 Turbo models, color of the instrument dials freely selectable, *speedART* Logo

Fitting

Art. Nr.: P97.450.310.010
Art. Nr.: P97.450.310.010UM



Aluminium pedal set for manual gearbox

4-pieces: foot rest, gas pedal, clutch and brake in aluminium

Fitting

Art. Nr.: P97.950.310.010
Art. Nr.: P97.950.310.010UM

01:00



Aluminium pedal set for TIPTRONIC

3-pieces: foot rest, gas pedal and brake in aluminium

Fitting

Art. Nr.: P97.950.310.011
Art. Nr.: P97.950.310.011UM

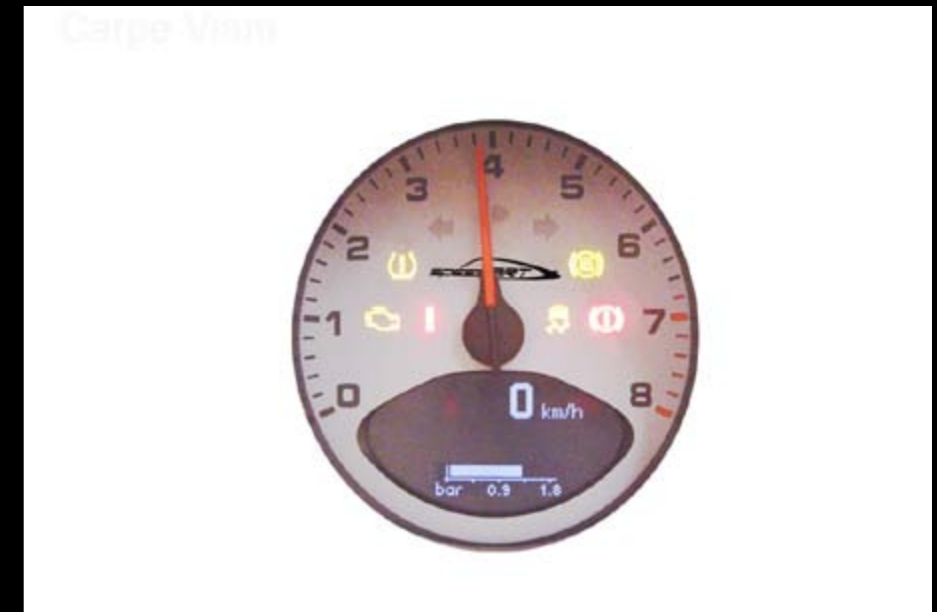
01:00



Interior



02:00



Powerboost display

Enlargement of power boost display up to 1,8 bar

Fitting

Art. Nr.: P97.450.310.015UM

02:00



Racing belt

Racing seat belt, color red/black or black/yellow

Fitting

Art. Nr.: P97.510.320.010
Art. Nr.: P97.510.320.010UM

04:00



Colored safety seat belts

Set of colored safety seat belts, color freely selectable, parts in exchange

Fitting

Art. Nr.: P97.500.310.010
Art. Nr.: P97.500.310.010UM

Interior



04:00



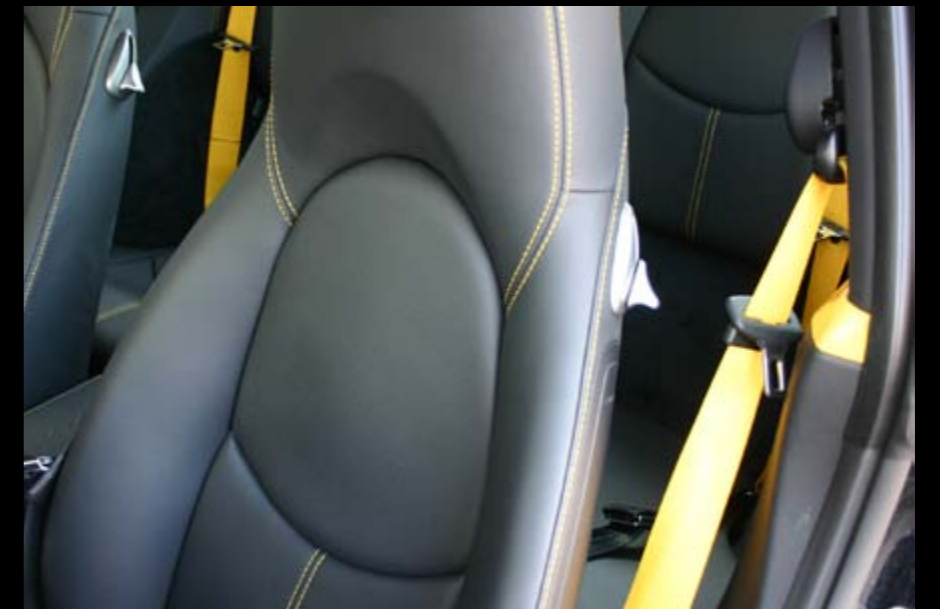
Colored safety seat belts

Complete set of seat belts (front/rear) with colored seat belts and seat belt retractor, color freely selectable

Fitting

Art. Nr.: P97.500.310.020
Art. Nr.: P97.500.310.020UM

120:00



Stitching package

Stitching package, contains: seats, instrument panel upper section, door panels upper section (breast wall front and rear), color freely selectable

Fitting

Art. Nr.: P97.550.310.TIIUM

Interior



01:00

Airbag sport steering wheel 340mm leather

Airbag sport steering wheel 340mm, ring in black leather, airbag leather in different colors and versions available, airbag stitching in all colors available, airbag with *speedART* logo, inclusive adapter (no leather), color of horn buttons black or silver

Fitting

Art. Nr.: P97.910.210.010
Art. Nr.: P97.910.210.010UM



01:00

Airbag sport steering wheel 340mm leather / aluminium

Airbag sport steering wheel 340mm, ring in black leather with aluminium-segments, airbag leather in different colors and versions available, airbag stitching in all colors available, airbag with *speedART* logo, inclusive adapter (leather), color of horn buttons black or silver

Fitting

Art. Nr.: P97.910.220.010
Art. Nr.: P97.910.220.010UM



01:00

Airbag sport steering wheel 340mm leather / carbon

Airbag sport steering wheel 340mm, ring in black leather with carbon-segments, airbag leather in different colors and versions available, airbag stitching in all colors available, airbag with *speedART* logo, inclusive adapter (leather), color of horn buttons black or silver

Fitting

Art. Nr.: P97.910.230.010
Art. Nr.: P97.910.230.010UM



Interior



01:00

Airbag sport steering wheel 340mm leather MUFU

Airbag sport steering wheel 340mm with multifunction fields, ring in black leather, airbag leather in different colors and versions available, airbag stitching in all colors available, airbag with *speedART* logo, inclusive adapter (leather), color of horn buttons and multifunction fields black (silver on request)

Fitting

Art. Nr.: P97.910.210.020
Art. Nr.: P97.910.210.020UM



01:00

Airbag sport steering wheel 340mm leather / aluminium MUFU

Airbag sport steering wheel 340mm with multifunction fields, ring in black leather with aluminium-segments, airbag leather in different colors and versions available, airbag stitching in all colors available, airbag with *speedART* logo, inclusive adapter (leather), color of horn buttons and multifunction fields black (silver on request)

Fitting

Art. Nr.: P97.910.220.020
Art. Nr.: P97.910.220.020UM



01:00

Airbag sport steering wheel 340mm leather / carbon MUFU

Airbag sport steering wheel 340mm with multifunction fields, ring in black leather with carbon-segments, airbag leather in different colors and versions available, airbag stitching in all colors available, airbag with *speedART* logo, inclusive adapter (leather), color of horn buttons and multifunction fields black (silver on request)

Fitting

Art. Nr.: P97.910.230.020
Art. Nr.: P97.910.230.020UM



Interior



01:00

F1-TIPTRONIC Airbag sport steering wheel 340mm leather

TIPTRONIC airbag sport steering wheel 340mm with F1-shift paddles, ring in black leather, airbag leather in different colors and versions available, airbag stitching in all colors available, airbag with *speedART* logo, inclusive adapter (leather), color of horn buttons and F1-shift paddles black or silver

Fitting

Art. Nr.: P97.910.210.030
Art. Nr.: P97.910.210.030UM



01:00

F1-TIPTRONIC Airbag sport steering wheel 340mm leather / aluminium

TIPTRONIC airbag sport steering wheel 340mm with F1-shift paddles, ring in black leather with aluminium-segments, airbag leather in different colors and versions available, airbag stitching in all colors available, airbag with *speedART* logo, inclusive adapter (leather), color of horn buttons and F1-shift paddles black or silver

Fitting

Art. Nr.: P97.910.220.030
Art. Nr.: P97.910.220.030UM



01:00

F1-TIPTRONIC Airbag sport steering wheel 340mm leather / carbon

TIPTRONIC airbag sport steering wheel 340mm with F1-shift paddles, ring in black leather with carbon-segments, airbag leather in different colors and versions available, airbag stitching in all colors available, airbag with *speedART* logo, inclusive adapter (leather), color of horn buttons and F1-shift paddles black or silver

Fitting

Art. Nr.: P97.910.230.030
Art. Nr.: P97.910.230.030UM



Interior



01:00

F1-TIPTRONIC Airbag sport steering wheel 340mm leather MUFU

TIPTRONIC airbag sport steering wheel 340mm with F1-shift paddles and multifunction fields, ring in black leather, airbag leather in different colors and versions available, airbag stitching in all colors available, airbag with *speedART* logo, inclusive adapter (leather), color of horn buttons, F1-shift paddles and multifunction fields black (silver on request)

Fitting

Art. Nr.: P97.910.210.040
Art. Nr.: P97.910.210.040UM



01:00

F1-TIPTRONIC Airbag sport steering wheel 340mm leather / aluminium MUFU

TIPTRONIC airbag sport steering wheel 340mm with F1-shift paddles and multifunction fields, ring in black leather with aluminium-segments, airbag leather in different colors and versions available, airbag stitching in all colors available, airbag with *speedART* logo, inclusive adapter (leather), color of horn buttons, F1-shift paddles and multifunction fields black (silver on request)

Fitting

Art. Nr.: P97.910.220.040
Art. Nr.: P97.910.220.040UM



01:00

F1-TIPTRONIC Airbag sport steering wheel 340mm leather / carbon MUFU

TIPTRONIC airbag sport steering wheel 340mm with F1-shift paddles and multifunction fields, ring in black leather with carbon-segments, airbag leather in different colors and versions available, airbag stitching in all colors available, airbag with *speedART* logo, inclusive adapter (leather), color of horn buttons, F1-shift paddles and multifunction fields black (silver on request)

Fitting

Art. Nr.: P97.910.230.040
Art. Nr.: P97.910.230.040UM



Interior



48:00

Upgrade custom leather Airbag steering wheel 340mm

Upgrade for airbag sport steering wheel 340mm, leather freely selectable, in different colors and versions available, stitching in all colors available, airbag with *speedART* logo, custom logo on request, inclusive adapter (leather)

Art. Nr.: P97.910.310.010



48:00

Upgrade custom painting Airbag steering wheel 340mm

Upgrade for airbag sport steering wheel 340mm with aluminium-segmenten, color freely selectable, in different colors available

Art. Nr.: P97.550.CUS



48:00

Upgrade upholstered Airbag-steering wheel 365mm

Upgrade for airbag steering wheel 365mm, upholstered and covered with leather, leather freely selectable, in different colors and versions available, stitching in all colors available

Art. Nr.: P97.910.320.010



Interior



4:00

F1-TIPTRONIC shift paddles BLACK

F1-TIPTRONIC shift paddles BLACK

Art. Nr.: P97.910.410.010



Floor mats

Floor mats with *speedART* logo, color freely selectable

Art. Nr.: P97.950.310.090



Entrance blends stainless steel

Entrance blends stainless steel, *speedART* logo

Fitting

Art. Nr.: P97.950.340.010
Art. Nr.: P97.950.340.010UM

01:00



